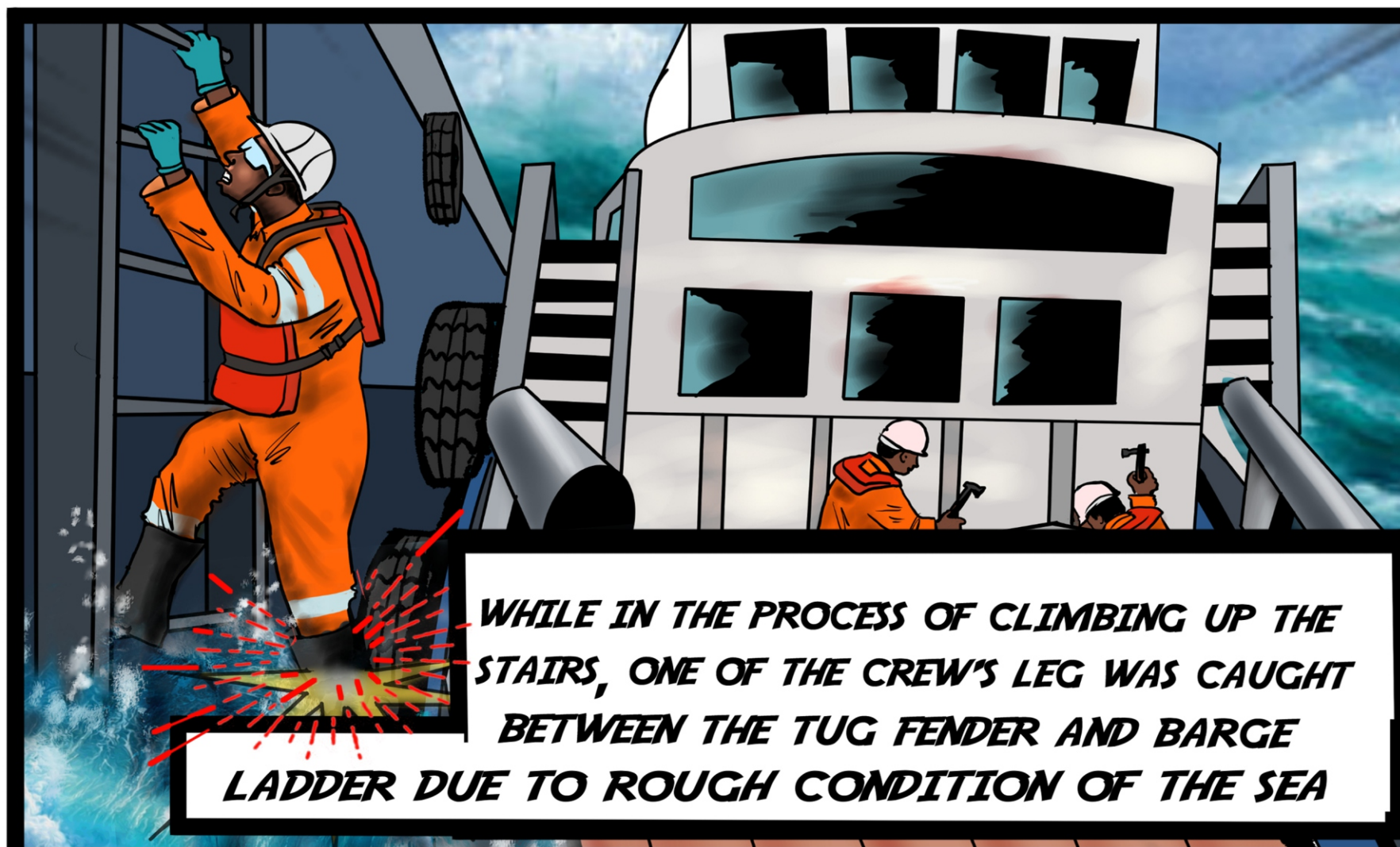
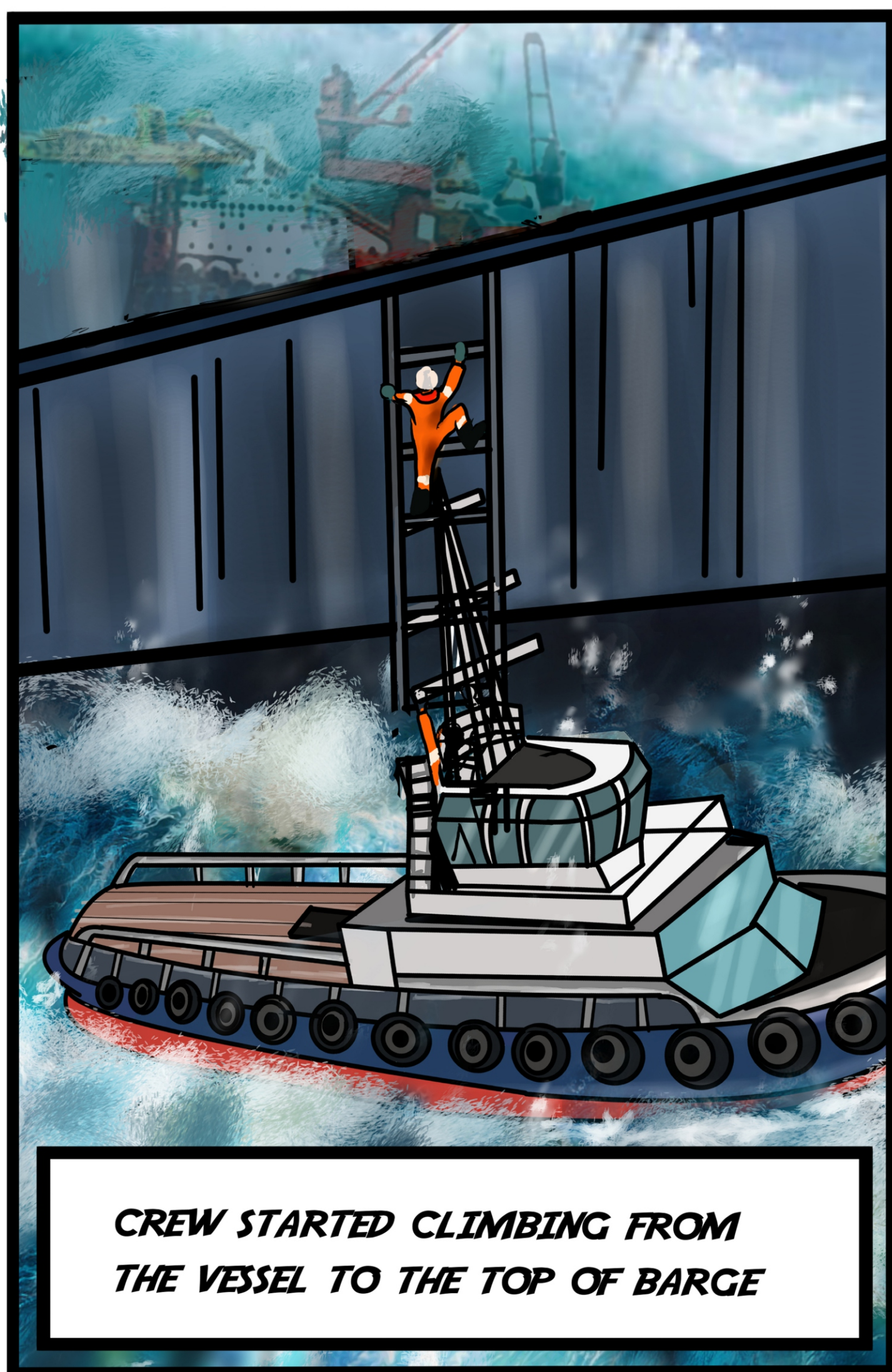
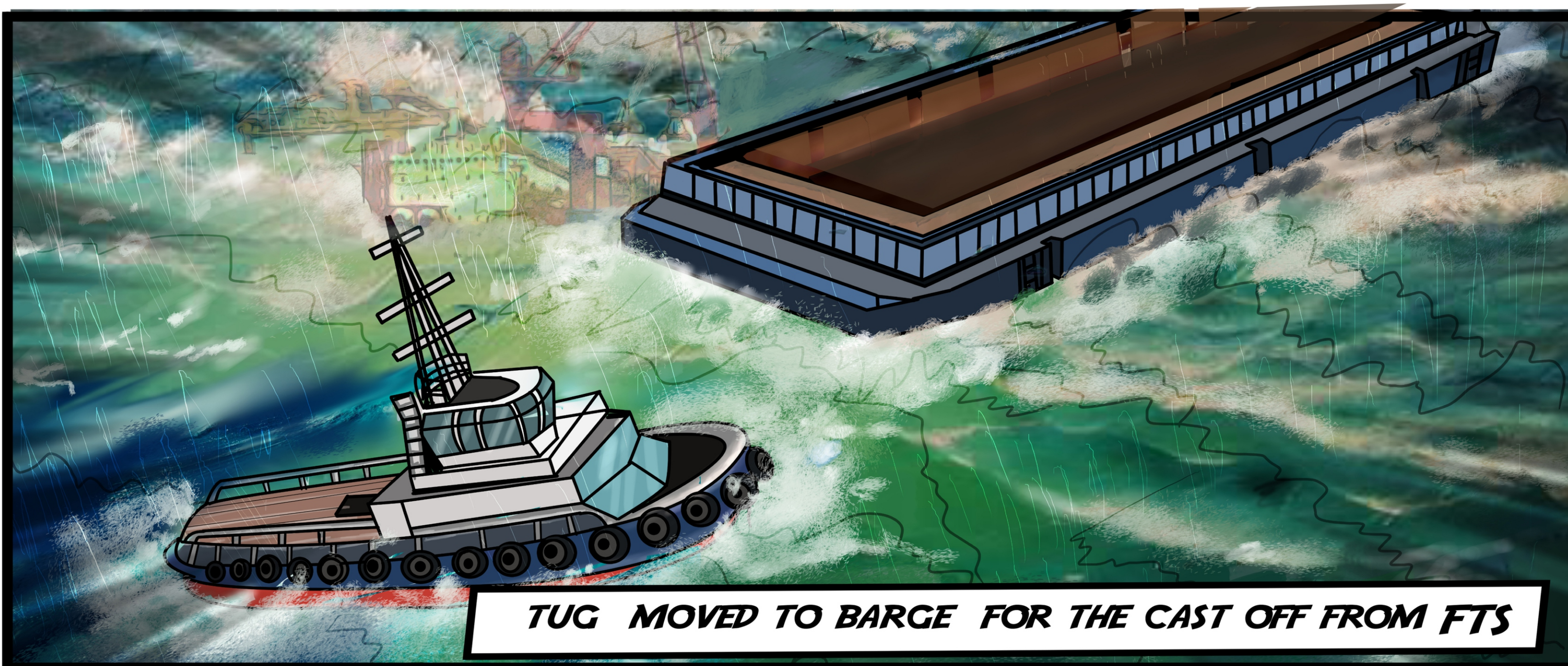


## NEVER UNDERESTIMATE THE POTENTIAL RISKS OF BAD WEATHER!

This Safety Post deals with the dangers of poor risk assessment. The Operation in question was considered as normal and routine, but could be seen as a risky activity for the operators due to the difficult weather conditions.

The crew was not aware that the sea swell was high and conditions very rough, and continued to concentrate on the completion of their operation. For your safety and that of others, never underestimate the potential risks of bad weather!

**THIS SAFETY POST IS BASED ON REAL EVENTS - PLEASE PRINT, POST AND DISCUSE THIS ISSUE**



## SAFETY/GOLDEN RULE

**DO:**

1. Perform a Last Safety Talk/Meeting before every operation.
2. Communicate with the bridge about operations in progress. The bridge and deck crew is in the best position to anticipate weather-related risks and can orient the vessel accordingly.
3. In case of bad weather: ensure that the crew members are well aware of the dangers.
4. Follow SMS/HSE Resources and procedure in place



**DON'T:**

1. Perform operations without adequate risk assessment.
2. Underestimate the impact of weather conditions on the equipment and crew working on deck.
3. Perform an unplanned operation without notifying the bridge.

